

全体配置図 (S=1:1000)

求積表

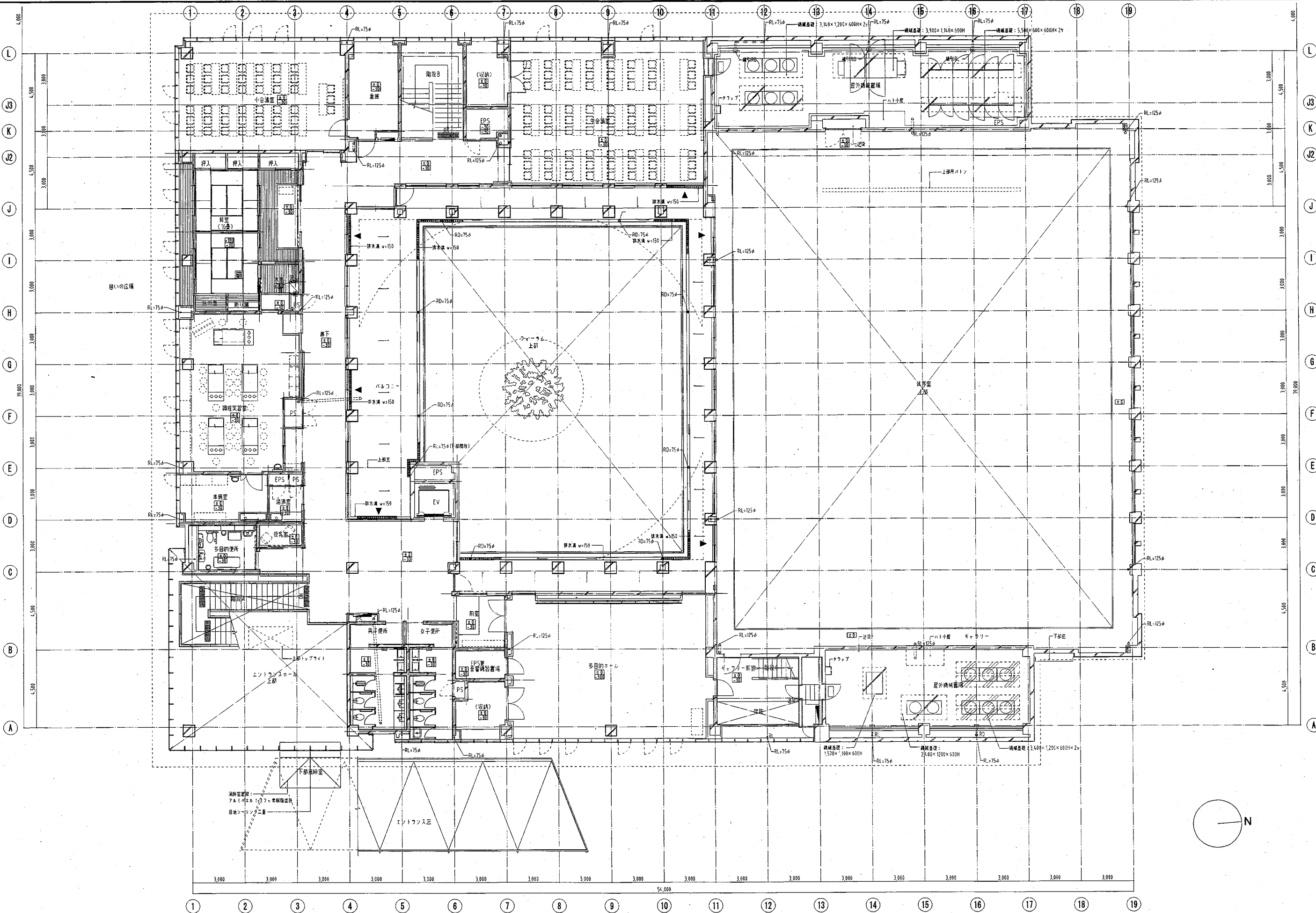
地番	深谷公民館用地			
No	Xn	Yn	Yn+1-Yn-1	Xn · (Yn+1-Yn-1)
15	115.630	54.614	-18.967	-2193.154210
16	103.801	48.229	-9.391	-974.795191
21	98.309	45.223	69.042	6787.449978
26	72.807	117.271	78.787	5736.245109
32	70.422	124.010	25.467	1793.437074
4	144.149	142.738	12.328	1777.068872
5	145.827	136.338	-29.447	-4294.167669
6	151.629	113.291	-37.157	-5634.078753
7	155.663	99.181	-22.611	-3519.696093
8	158.308	90.680	-19.330	-3060.093640
13	162.339	79.851	-23.484	-3812.369076
14	138.895	67.196	-25.237	-3505.293115
			合計	-10899.446714
			合計面積	5449.723570
			地積	5449.72 m <sup>2</sup>

	TP	備考
1FL	35,300	GL+100
GL	35,200	
KBM(23)	34,483	GL-717

revisions


深谷生涯学習センター・深谷公民館				配置図	
date	designed by	drawn by	checked by	A	
scale 1:200				201	





revisions


深谷生涯学習センター・深谷公民館  
 平面図-2  
 (2階平面図)

date	designed by	drawn by	checked by

scale	1:100

A  
203